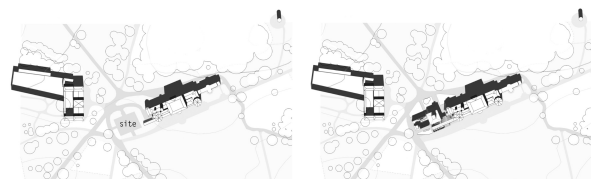


2.2 HEATON HALL

*an architectural interpretation*

**BENJAMIN CARTER** A project driven by the desire to create a harmonic ensemble of buildings, divided by programme, mediating between the internal hermetic condition of Heaton Hall and the open verdure of the eponymous park. The resulting study became an investigation into the language of classicism, how to fashion a building representative of modern construction yet reconciling two architectural epochs; involving the abstraction of the principle of trabeation, the selective application of ornamentation, a judicious use of materiality, and a plan determined by the Palladian villa whilst negotiating with the particularities of site.

more at <http://benjaminjamescarter.wixsite.com/portfolio>



site plan - existing

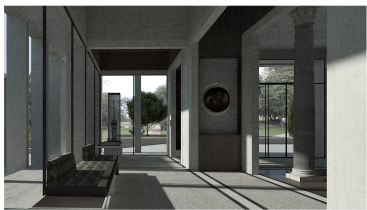
site plan - proposed

A key determinant of plan and section was the requisite to reconcile the two dichotomous conditions of the park and the hall. In order to introduce an intermediate architecture, a sort of filter, the new architecture must exhibit elements of both existing conditions: the consequent design is characterised by a rhythm of indoor-outdoor spaces establishing a varied spatial sequence between park and hall.

The intervention can be read as an ensemble of similar buildings inflected towards their respective programmes, with a network of interstitial spaces and routes; establishing a quasi-urban condition.



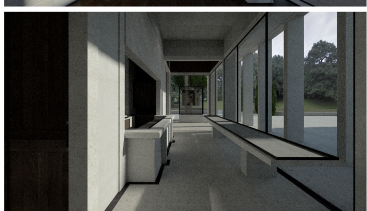
The section as a liminal medium - a rhythm of indoor - outdoor prolongs transition between hall and park



I



II

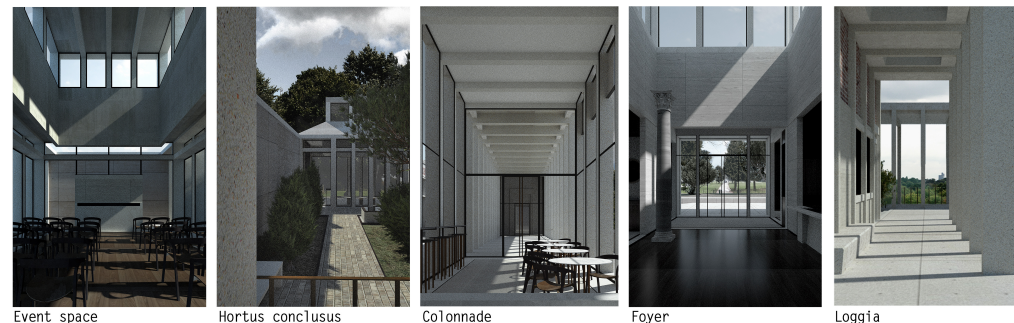


III

internal perspectives - central pavilion

- I. Heaton Hall artefact gallery
- II. central foyer space
- III. shop

The plan is derived from the Palladian Villa type employed by Wyatt in the design of the hall itself, the new architecture therefore should be legible as a continuation of the hall.



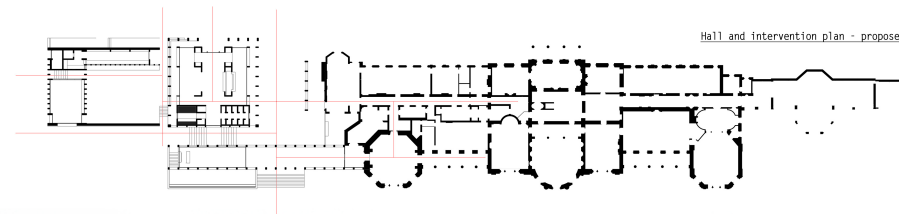
Event space

Hortus conclusus

Colonnade

Foyer

Loggia



Hall and intervention plan - proposed



Hall and intervention elevations - proposed



Existing hall and intervention

The new architecture respects the cornice line established by the hall's colonnade; deferring to the existing architecture whilst asserting itself as a resolutely contemporary insertion.